



## **Contents**

<b>2. Legislation and statutory responsibilities</b>	<b>3</b>
<b>3. Roles and responsibilities</b>	<b>3</b>
<b>4. Equal opportunities</b>	<b>5</b>
<b>5. Being notified that a child has a medical condition</b>	<b>5</b>
<b>6. Individual healthcare plans</b>	<b>6</b>
<b>7. Managing the administration of medicines</b>	<b>7</b>
<b>8. Emergency procedures</b>	<b>9</b>
<b>9. Training</b>	<b>9</b>
<b>10. Record keeping</b>	<b>10</b>
<b>11. Liability and indemnity</b>	<b>10</b>
<b>12. Complaints</b>	<b>10</b>
<b>13. Monitoring arrangements</b>	<b>10</b>

## 1. Aims

This policy aims to ensure that:

- Pupils, staff and parents understand how our school supports pupils with medical conditions
- Pupils with medical conditions are properly supported to allow them to access the same education as other pupils, including school trips and sporting activities

Monkleigh Primary School will implement this policy by:

- Making sure sufficient staff are suitably trained;
- Making staff aware of pupil's condition, where appropriate;
- Making sure there are cover arrangements to ensure someone is always available to support pupils with medical conditions;
- Providing supply teachers with appropriate information about the policy and relevant pupils;
- Developing and monitoring individual healthcare plans (IHPs).

**The person with responsibility for implementing this policy is Karen Reeves.**

## 2. Legislation and statutory responsibilities

This policy meets the requirements under [Section 100 of the Children and Families Act 2014](#), which places a duty on Governing Boards to make arrangements for supporting pupils at their schools with medical conditions.

It is also based on the Department for Education's statutory guidance: [Supporting pupils at school with medical conditions](#).

## 3. Roles and responsibilities

### 3.1 The Headteacher

The Headteacher will:

- Make sure that all staff are aware of this policy and understand their role in its implementation;
- Ensure that there are a sufficient number of trained staff available to implement this policy and deliver against all individual healthcare plans (IHPs), including in contingency and emergency situations;
- Take overall responsibility for the development of IHPs;
- Make sure that school staff are appropriately insured and are aware that they are insured to support pupils in this way;
- Contact the school nursing service in the case of any pupil who has a medical condition that may require support at school, but who has not yet been brought to the attention of the school nurse;
- Ensure that systems are in place for obtaining information about a child's medical needs and that this information is kept up to date.

### **3.2 Staff**

Supporting pupils with medical conditions during school hours is not the sole responsibility of one person. Any member of staff may be asked to provide support to pupils with medical conditions, although they will not be expected to do so. This includes the administration of medicines.

Those staff who take on the responsibility to support pupils with medical conditions will receive sufficient and suitable training, and will achieve the necessary level of competency before doing so.

Teachers will take into account the needs of pupils with medical conditions that they teach. All staff will know what to do and respond accordingly when they become aware that a pupil with a medical condition needs help.

### **3.3 Parents**

Parents will:

- Provide the school with sufficient and up-to-date information about their child's medical needs and work with the school in partnership to deliver an effective transition package;
- Be involved in the development and review of their child's IHP and may be involved in its drafting;
- Carry out any action they have agreed to as part of the implementation of the IHP e.g. provide medicines and equipment.

### **3.4 Pupils**

Pupils with medical conditions will often be best placed to provide information about how their condition affects them. Pupils should be as involved as possible in discussions about their medical support needs and contribute as much as possible to the development of their IHPs. They are also expected to comply with their IHPs.

### **3.5 School Nurses**

School nurses will have a partnership agreement with schools that identify key issues/needs of the school but not individual medical needs, however, you can refer for services such as early anxiety intervention, behaviour, healthy lifestyle concerns etc.

## **4. Equal opportunities**

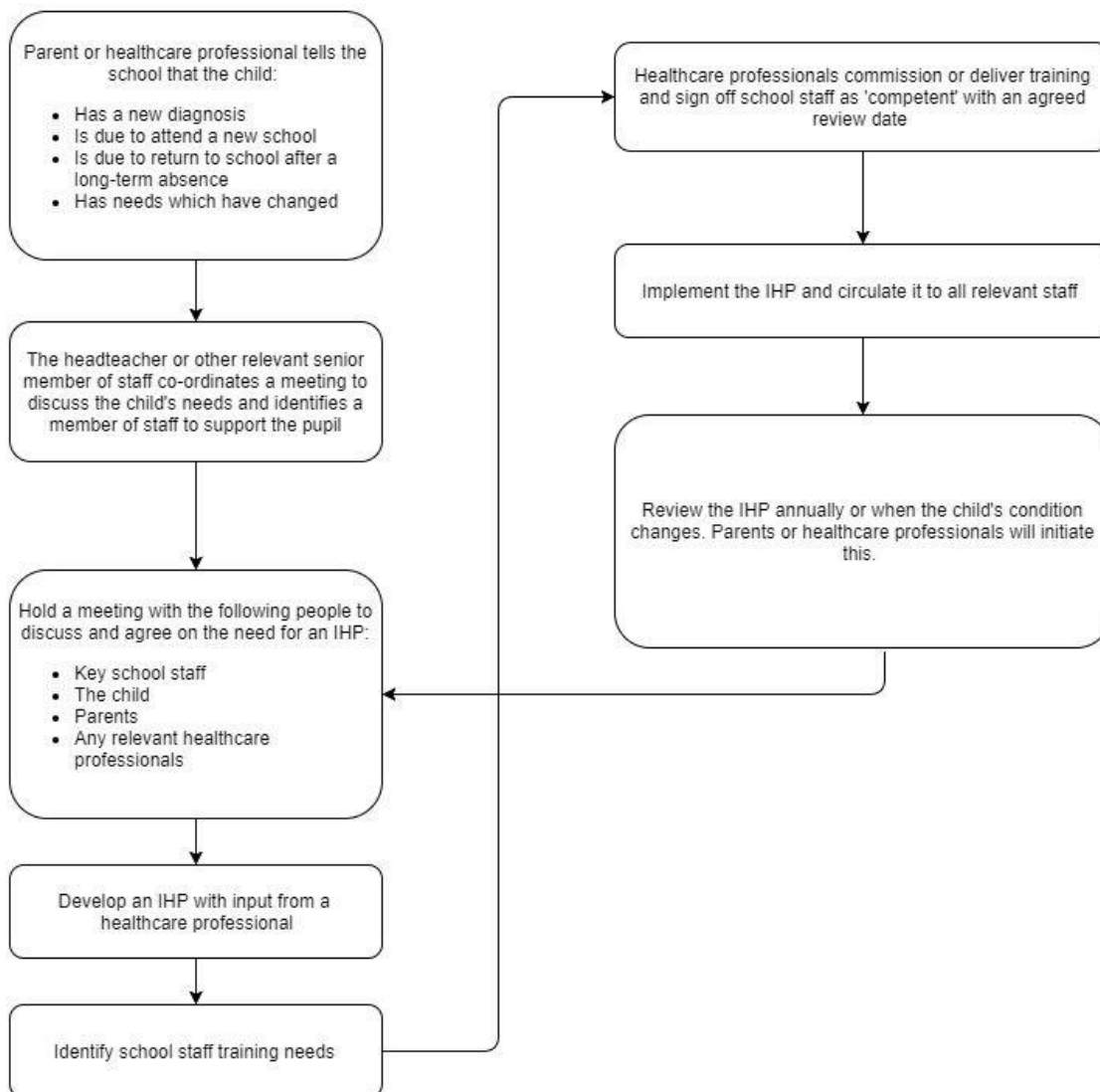
Monkleigh Primary School is clear about the need to actively support pupils with medical conditions to participate in school trips and visits, or in sporting activities, and not prevent them from doing so.

We will consider what reasonable adjustments need to be made to enable these pupils to participate fully and safely on school trips, visits and sporting activities.

Risk assessments will be carried out so that planning arrangements take account of any steps needed to ensure that pupils with medical conditions are included. In doing so, pupils, their parents and any relevant healthcare professionals will be consulted.

## 5. Being notified that a child has a medical condition

When a school is notified that a pupil has a medical condition, the process outlined below will be followed to decide whether the pupil requires an IHP. The school will make every effort to ensure that arrangements are put into place as soon as practically possible, however with complex needs it may be necessary to consider an appropriate start date.



## 6. Individual Healthcare Plans

The Headteacher has overall responsibility for the development of IHPs for pupils with medical conditions. This may be delegated to an appropriate member of staff.

Plans will be reviewed at least annually, or earlier if there is evidence that the pupil's needs have changed.

Plans will be developed with the pupil's best interests in mind and will set out:

- What needs to be done;
- When;
- By whom.

Not all pupils with a medical condition will require an IHP. It will be agreed with a healthcare professional and the parents when an IHP would be inappropriate or disproportionate. This will be based on evidence. If there is not a consensus, the Headteacher will make the final decision.

Plans will be drawn up in partnership with the school, parents and a relevant healthcare professional, such as the school nurse, specialist or paediatrician, who can best advise on the pupil's specific needs. The pupil will be involved wherever appropriate.

IHPs will be linked to, or become part of, any statement of special educational needs (SEN) or educational healthcare (EHC) plan. If a pupil has SEN but does not have a statement or EHC plan, the SEN will be mentioned in the IHP.

The level of detail in the plan will depend on the complexity of the child's condition and how much support is needed. The Headteacher will consider the following when deciding what information to record on IHPs:

- The medical condition, its triggers, signs, symptoms and treatments;
- The pupil's resulting needs, including medication (dose, side effects and storage) and other treatments, time, facilities, equipment, testing, access to food and drink where this is used to manage their condition, dietary requirements and environmental issues, e.g. crowded corridors, travel time between lessons;
- Specific support for the pupil's educational, social and emotional needs. For example, how absences will be managed, requirements for extra time to complete exams, use of rest periods or additional support in catching up with lessons, counselling sessions;
- The level of support needed, including in emergencies. If a pupil is self-managing their medication, this will be clearly stated with appropriate arrangements for monitoring;
- Who will provide this support, their training needs, expectations of their role and confirmation of proficiency to provide support for the pupil's medical condition from a healthcare professional, and cover arrangements for when they are unavailable;
- Who in the school needs to be aware of the pupil's condition and the support required;
- Arrangements for written permission from parents and the Headteacher for medication to be administered by a member of staff, or self-administered by the pupil during school hours;

- Separate arrangements or procedures required for school trips or other school activities outside of the normal school timetable that will ensure the pupil can participate, e.g. risk assessments;
- Where confidentiality issues are raised by the parent/pupil, the designated individuals to be entrusted with information about the pupil's condition;
- What to do in an emergency, including who to contact, and contingency arrangements.

## **7. Managing the administration of medicines**

7.1 The Headteacher will accept responsibility in principle for members of school staff giving or supervising a pupil taking prescribed medication during the day, where those members of staff have volunteered to do so.

Any parent/carer requesting the administration of medication will be given a copy of this policy.

- Prescribed medication will be accepted and administered in the establishment;
- Non-prescription medication will only be accepted and administered in the following circumstances:
  - i. When a Pupil requires non-prescribed medication for a minor condition that will enable them to remain in school, rather than being sent home. Examples of minor conditions: headache, toothache, pain from minor injury already treated.

Prior written parental consent is required before any prescribed medication can be administered.

Non prescription medicine can be administered after verbal or written agreement from a parent.

Only reasonable quantities of medication will be accepted.

Each item of medication should be delivered in its original dispensed container and handed directly to a member of the school's staff, as authorised by the Headteacher.

Each item of medication should be clearly labelled with the following information:

- Student's name
- Name of medication
- Dosage
- Frequency of dosage
- Date of dispensing
- Storage requirements (if important)
- Expiry date (if available)

The school will not accept items of medication which are in un-labelled containers or not in their original container.

Unless otherwise indicated, all medication to be administered in the school will be kept in a designated lockable cupboard or in a fridge in a secure area. Pupils will be informed about where their medicines are stored and will be able to access them immediately.

Where it is appropriate to do so, students will be encouraged to administer their own asthma medication if necessary under staff supervision. Parents/carers will be asked to confirm in writing if they wish their student to carry their medication with them. In the event of a drug which is prescribed but not emergency medicine such as Methylphenidate (Ritalin), students may not be allowed to carry these.

It is the responsibility of parents/carers to notify the school if there is a change in medication, a change in dosage requirements, or the discontinuation of a student's need for medication. The school will review administration routines termly.

Staff who volunteer to assist in the administration of invasive medication will receive appropriate training/guidance through arrangements made with the school's Nurse Service. In pre-school settings arrangements will be made through Primary Care Health Visitors.

Anyone giving a pupil any medication (for example, for pain relief) will first check maximum dosages and when the previous dosage was taken. Parents will always be informed.

Medicines will be returned to parents to arrange for safe disposal when no longer required.

## **7.2 Pupils managing their own needs**

Pupils who are competent will be encouraged to take responsibility for managing their own medicines and procedures. This will be discussed with parents and it will be reflected in their IHPs.

Pupils will be allowed to carry their own medicines and relevant devices wherever possible.

## **7.3 Unacceptable practice**

School staff should use their discretion and judge each case individually with reference to the pupil's IHP, but it is generally not acceptable to:

- Prevent pupils from easily accessing their inhalers and medication, and administering their medication when and where necessary;
- Assume that every pupil with the same condition requires the same treatment;
- Ignore the views of the pupil or their parents;
- Ignore medical evidence or opinion (although this may be challenged);
- Send children with medical conditions home frequently for reasons associated with their medical condition or prevent them from staying for normal school activities, including lunch, unless this is specified in their IHPs;
- If the pupil becomes ill, send them to the school office unaccompanied or with someone unsuitable;
- Penalise pupils for their attendance record if their absences are related to their medical condition, e.g. hospital appointments;
- Prevent pupils from drinking, eating or taking toilet or other breaks whenever they need to in order to manage their medical condition effectively;
- Require parents, or otherwise make them feel obliged, to attend school to administer medication or provide medical support to their pupil, including with toileting issues. No

parent should have to give up working because the school is failing to support their child's medical needs;

- Prevent pupils from participating, or create unnecessary barriers to pupils participating in any aspect of school life, including school trips, e.g. by requiring parents to accompany their child;
- Administer, or ask pupils to administer, medicine in school toilets.

## **8. Emergency procedures**

If any doubt staff will follow the school's normal emergency procedures (for example, calling 999). All pupils' IHPs will clearly set out what constitutes an emergency and will explain what to do.

If a pupil needs to be taken to hospital, staff will stay with the pupil until the parent arrives, or accompany the pupil to hospital by ambulance.

## **9. Training**

Staff who are responsible for supporting pupils with medical needs will receive suitable and sufficient training to do so.

The training will be identified during the development or review of IHPs. Staff who provide support to pupils with medical conditions will be included in meetings where this is discussed.

The relevant healthcare professionals will lead on identifying the type and level of training required and will agree this with the Headteacher. Training will be kept up to date.

Training will:

- Be sufficient to ensure that staff are competent and have confidence in their ability to support the pupils;
- Fulfil the requirements in the IHPs;
- Help staff to have an understanding of the specific medical conditions they are being asked to deal with, their implications and preventative measures.

Healthcare professionals will provide confirmation of the proficiency of staff in a medical procedure, or in providing medication.

All staff will receive training so that they are aware of this policy and understand their role in implementing it, for example, with preventative and emergency measures so they can recognise and act quickly when a problem occurs. This will be provided for new staff during their induction.

## **10. Record keeping**

The Headteacher will ensure that written records are kept of all medicine administered to pupils. Parents will be informed if their pupil has been unwell at school.

IHPs are kept in a readily accessible place which all staff are aware of.

### **11. Liability and indemnity**

Monkleigh Primary School will have appropriate insurance cover.

### **12. Complaints**

Parents with a complaint about their child's medical condition should discuss these directly with the Headteacher in the first instance. If the Headteacher cannot resolve the matter, they will direct parents to the school's complaints procedure.

### **13. Monitoring arrangements**

This Policy will be reviewed and approved by the Governing Board annually.

#### **Policy History**

<b>Version</b>	<b>Date Issued</b>	<b>Brief Summary of Change</b>	<b>Owner's Name</b>
19/12	10/09/2019	Policy Adopted	Leah Paiano
19/12	09/11/2020	Policy Annual Review	Teaching & Learning committee
19/12	Feb 2022	Policy Annual Review	C Slocombe / FGB
19/12	01/03/2023	Policy Annual Review	C Slocombe / FGB