



10<sup>th</sup> Dec  
2018

**FROM  
THE  
HEAD:**

Dear Parents, Carers and Children,

**Christmas Performances – this Wednesday**

We understand that parents/carers like to take photos of their children at these events. We are requesting that no photos are taken during the performance itself. Instead opportunities to take photos will be made available at the end of the show. As always, please do not share these photos on social media.

**Arrangements for the day.**



- All children to be dropped off at Langtree Village Hall at **9.20am** please for morning rehearsals. (*Don't forget your cake donations for FOMS!*) Children booked into Breakfast Club / arriving at school as normal will be transported across by staff from school.
- Children to be provided with a packed lunch from home, unless they have already pre-ordered a school dinner to be served at Langtree.
- 1.45pm – Performance starts. (Whoops-a-daisy Angel, followed by Bah Humbug) Parents to take their children home after the afternoon performance at approx 3.45pm. **There is no Tea Club on this day.**
- Children in Years 1-6 to be brought back to Langtree at 6pm in time for the 6.30pm performance. (Bah Humbug only)
- Approx end time – 7.45pm

**Lost property**....will be emptied at the end of term; please do check for any missing items! It is located in the porch at the front of school.

**Attendance Reports**

Reports are scheduled to be run again this week; this will result in letters being sent out to parents of children whose attendance has dropped below, or remains below 96%. This is something that we have been instructed to do by the Education Welfare Officer – please do not complain about us doing it.

Please do not be overly alarmed if you receive a letter – there have been some nasty bugs going around which is bound to have an effect on attendance percentages, hopefully coughs, colds and sickness bugs will soon improve. Time-keeping also affects the percentages – the school's registration period ends at 9:10 each morning, so to avoid a late registration mark, please ensure you are here in plenty of time.

**Change to Menu** – Please note a change to next Wednesday's menu as it is the last day of term. (See menu at bottom of newsletter)



**Christingle Service – Mon 17<sup>th</sup> December** – We'll be attending a Christingle Service at the Church on Monday. Parents and Carers are welcome to join us. The service starts at 1.45pm.



| <b><u>"Stars of the week"</u></b> |                  |                 |                 |
|-----------------------------------|------------------|-----------------|-----------------|
| Class R - Kalina                  | Class 1 - Shayla | Class 2 - Flora | Class 3 - Jimmy |
| Well done to them all!            |                  |                 |                 |

Karen Reeves (Head Teacher)

# a GREAT BIG thank you!

## FROM THE OFFICE:



We have inundated you lately with forms requiring responses, Residential deposits, Christmas lunch orders, invoices etc.etc. Sorry that there seems to have been SO many lately – unfortunately it seems to be normal around this time of year. We have been nagging you a bit - but it's nearly the holidays & you will soon have a couple of weeks without your phone pinging! So a big thank-you from the office.

One final push this term though... Please ensure any outstanding debt has been paid in full before we break up next week, to avoid the debt being passed to County.

Is the data that we hold for you up to date? Have you moved house or changed your phone number? Please make sure you tell us if you have. Thank you.

**If you have not yet collected your tickets for the performances on Wednesday, please do so.**

## CLASS NEWS



**Class Parties** – We will hold Class Parties next Tuesday 18<sup>th</sup> December. Your child's Class Teacher will send home a slip requesting which food to bring in and share on the day. Children may come to school wearing party clothes! **There will be no school dinners on this day.**

Another Teachers Rock Youth Choir project is on the agenda for Spring/Summer term. There will be an event at Filleigh at the end of the spring term, and the project will culminate with a large concert in The Great Hall, Exeter University in July. We will probably work with East The Water school again, however if there is enough interest we could work independently - please see me if your child is interested. Thank you.

## SPORT

Well done to our Indoor Athletics competitors last week, we have qualified for the North Devon finals in January!

The next few weeks are a little busy with Christmas, we will try and get outside for PE so please can everyone have their change of shoes and PE kit. Thankyou.

Any questions? Please find me or contact me at [sport@monkleigh-primary.devon.sch.uk](mailto:sport@monkleigh-primary.devon.sch.uk)

## AFTER SCHOOL CLUBS

All clubs have finished until January. Some new clubs will be on offer in the New Year, and some will remain the same. Details will come home via Parentmail before we break up.

## FOREST SCHOOL

Class 3 .....Forest School after Christmas on a Monday afternoon.

Class 2 .....will continue with their Forest School sessions after Christmas on a Friday.

*All bookings are to be made by 1pm at the latest on the afternoon required.*

## B&T CLUB

***There will now be weekly booking slips available from Tea club. If a child does regular bookings this will only need filling out once or until there is a change in bookings (Please put regular somewhere on the form if this applies to you). This is a new method to help get all bookings organised and correct. Please see B and T staff for your booking slip. Thank you***

**NB: There will be no Tea Club this Wednesday due to the Christmas Productions.**

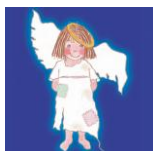
**ILLNESS-** Please keep children home and away from pre-school if they are unwell. We are desperately trying to prevent the passing on of germs and bugs, Thank you.

**Pre-school**

**PROGRESS REVIEWS-** You should have all now received your Autumn term reports. Please add your comments, sign and return to your child's key worker. Thank you.



**CHRISTMAS PARTY-** TICKETS NOW AVAILABLE TO PURCHASE AT A PRICE OF £2. Children are invited to an end of term Festive party. We will be enjoying a bring-and-share picnic and joining in with Christmas themed activities and games. Of course, they are welcome to dress up in their finest Christmas party attire!



**CHRISTMAS PLAY-** WEDNESDAY 12<sup>th</sup> DECEMBER at Langtree Village Hall. The play will begin at 1.45 followed by the older children's production. Please drop all children to Langtree Village Hall from 9:20am.

**ALL CHILDREN WILL NEED A PACKED LUNCH. (ALL children will need to be collected from preschool staff after their performance of Whoops-A-Daisy Angel.)**

With Christmas rapidly approaching, many of us are shopping online. Help us raise funds for FOMS by going to: <https://www.easyfundraising.org.uk/causes/friendsofmonkleigh/>

**FOMS**

A BIG thank you to everyone who came to our Christmas Fayre on Friday. We're still counting the money and will announce how much was raised as soon as possible. Father Christmas left some presents with us on Friday. If you would like to buy one for your child- they are £2.50. We have some children's crafts too for £2.



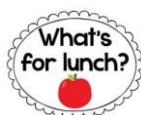
**Cake Donation please!** Please can cake donations be brought in on Weds for us to sell at the Christmas Performance at Langtree. Refreshments will be served at both the afternoon and evening performance.

**50:50 – Nov: 1<sup>st</sup> – Jane Clarke; 2<sup>nd</sup> – Janice Griffiths; 3<sup>rd</sup> – Tara Stanbury**

**\*\*Thank you to everyone who has supported us this year – you are all amazing\*\***

**Menu for NEXT week (w/c 17 Dec)**

| Mon                               | Tue                              | Wed                               | Thu             | Fri             |
|-----------------------------------|----------------------------------|-----------------------------------|-----------------|-----------------|
| Meat Pizza                        | Class Parties – No School Dinner | Fish & Chips                      | Christmas Break | Christmas Break |
| Cheese Pizza                      |                                  | Cheese Wheel                      |                 |                 |
| Jacket Potato (Cheese/Beans/Tuna) |                                  | Jacket Potato (Cheese/Beans/Tuna) |                 |                 |



You have been sent home the new menu for next term via Parentmail. This menu starts after Christmas.

# FOR YOUR DIARY

|   |    |                                                                                                                      |    |                                                                                                                            |
|---|----|----------------------------------------------------------------------------------------------------------------------|----|----------------------------------------------------------------------------------------------------------------------------|
| M | 10 | B&T Film Club – Coco (PG)<br><b>NO CLUBS FOR REMAINDER OF TERM</b>                                                   | 17 | 1.45pm – Christingle Service – Village Church. All welcome<br><b>NO CLUBS FOR REMAINDER OF TERM</b>                        |
| T | 11 | <b>NO CLUBS FOR REMAINDER OF TERM</b>                                                                                | 18 | Class Parties – No school dinners on this day<br><b>NO CLUBS FOR REMAINDER OF TERM</b>                                     |
| W | 12 | Whole School Christmas Productions at Langtree Village Hall 1.45pm & 6.30pm<br><b>NO CLUBS FOR REMAINDER OF TERM</b> | 19 | Menu change – Fish & Chips<br>Last Day of Term – Have a wonderful Christmas break<br><b>NO CLUBS FOR REMAINDER OF TERM</b> |
| T | 13 | School Christmas Dinner<br><b>NO CLUBS FOR REMAINDER OF TERM</b>                                                     | 20 | Christmas Break!<br><b>NO CLUBS FOR REMAINDER OF TERM</b>                                                                  |
| F | 14 | <b>NO CLUBS FOR REMAINDER OF TERM</b>                                                                                | 21 | Christmas Break!<br><b>NO CLUBS FOR REMAINDER OF TERM</b>                                                                  |
| S | 15 | Brass band at Escape Down The Rabbit Hole<br>Teachers Rock Great Torrington Church                                   | 22 | Christmas Break! (Back to school Tuesday 8 <sup>th</sup> Jan)                                                              |
| S | 16 |                                                                                                                      | 23 |                                                                                                                            |

**Brass band at Escape Down The Rabbit Hole, Barnstaple – Sat 15<sup>th</sup> Dec 2pm.**

**(some of our children are involved and are playing their cornets!)**

Community

**TEACHERS ROCK**  
**GREAT TORRINGTON**  
**ST MICHAEL AND ALL ANGELS CHURCH**  
**Saturday 15th December 7:30pm**

Teachers Rock® perform a repertoire of contemporary music as featured on their album 'What We Started'

Tickets £5.00 on the door  
 or available in advance from enquiries@teachersrock.co.uk

Devon Libraries  
**Christmas Craft Club**

Join us to craft your own Christmas picture frame!  
**Saturday 15th December 2018**  
 Drop in session 10.30 - 12.15  
**Torrington Library**  
 Donations welcome

Devon Libraries is part of Libraries Unlimited  
 Libraries Unlimited is a registered charity. Every penny raised goes directly towards library services that help make a difference to people's lives and communities. To donate, please visit librariesunlimited.org.uk  
 Registered charity number: 1170992